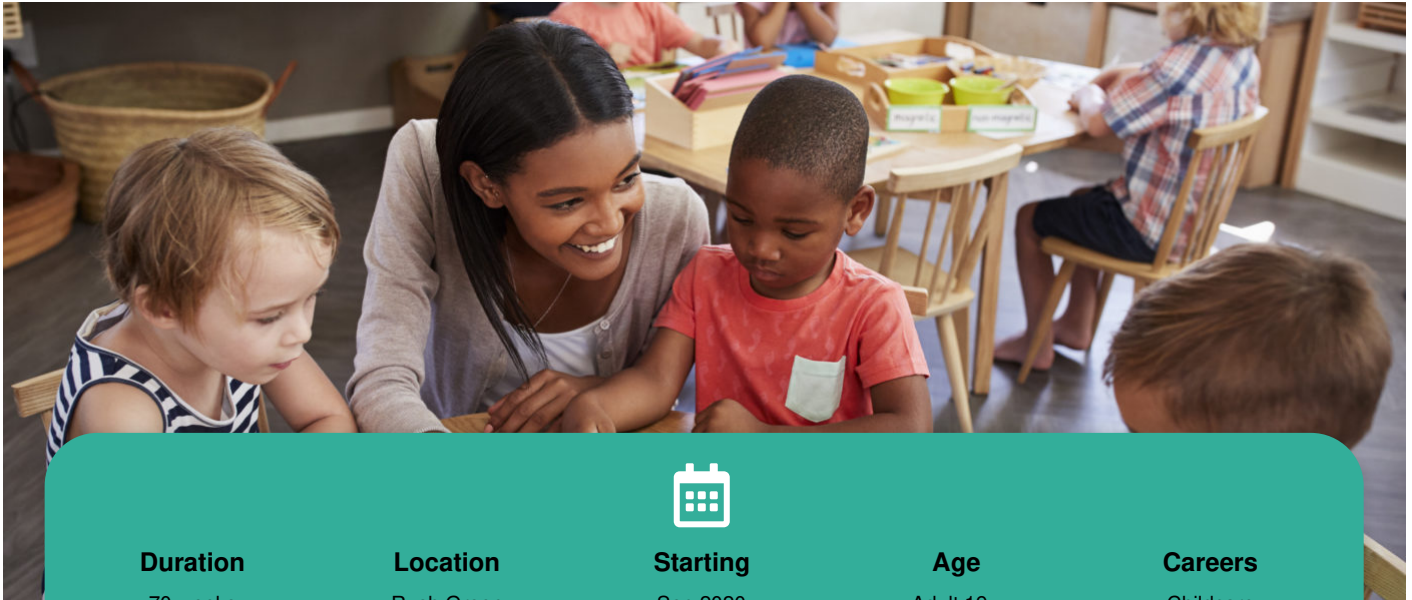


Level 3

Early Years Workforce

CACHE Diploma

**Duration**

70 weeks

Location

Rush Green

Starting

Sep 2020

Age

Adult 19+

Careers

Childcare

How much does this course cost?

ADULT 19+

£2,450

The above fees include tuition and exam fees.

You may be eligible for an Advanced Learner Loan to help with the course fees. Contact us to discuss what Financial support is available.

Overview

This course is part-time over 2 years.

What you'll learn

You'll learn to work with children from birth to 7 years 11 months of age, gaining in-depth knowledge of legislation, curriculum, development and safeguarding.

Assessments / Exams

You'll have a personal assessor assigned to you to ensure your competency in the work environment.

A typical week

You will spend 5 hours in college and a minimum of 12 hours per week in the work placement, as a volunteer.

Entry requirements

It is preferred that you have successfully completed Level 2 Early Years Education & Care (EYE).

You'll also need Level 2 English & Maths, or to be working towards English & Maths GCSEs.

Our teaching staff

All of our teaching staff have vast industry experience within early years and schools environments.

Links with employers

You'll complete 750 hours of placement time over the 2-year course. This on-the-job experience will give you a huge advantage when you look to develop your career.

What this course leads to

Having successfully completed the Level 3 qualification, you can either head into employment or continue your studies with a degree-level course.

Visit this course on our website: <https://www.barkingdagenhamcollege.ac.uk/find/courses/0000003845>

For further information please contact the college: <https://www.barkingdagenhamcollege.ac.uk/contact>